

MATCHING **In CHILD CARE**



An overview of literature on decision
making in family placements

by Kirti Zeijlmans, Mónica López,
Hans Grietens and Erik Knorth
University of Groningen



Modell & Dambacher, 1997; Quinton, 2012



Modell & Dambacher, 1997; Quinton, 2012



CHILDREN'S characteristics



Qualities of the **CARERS**

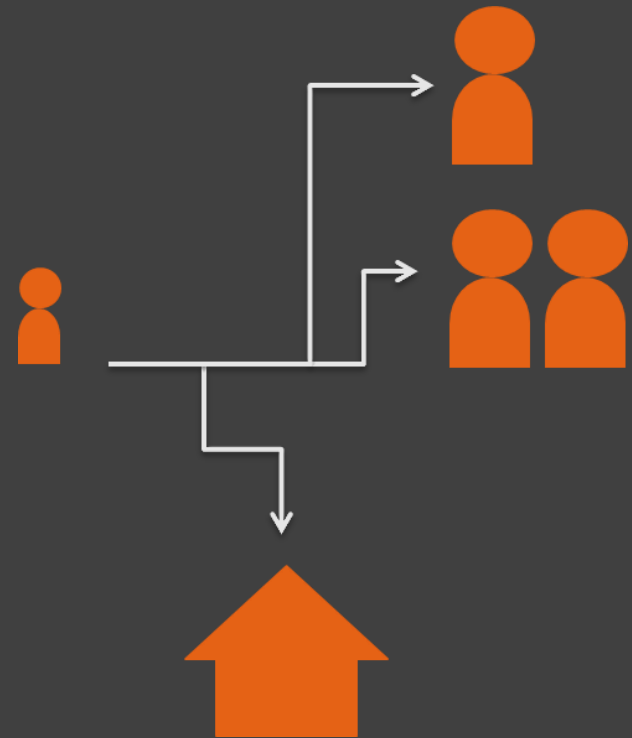


INTERACTION carer and child

What is known about the decision making process on matching in care?

Factors that **should** be considered in a family placement

Factors that are **actually** considered in practice



METHOD



Scoping literature review

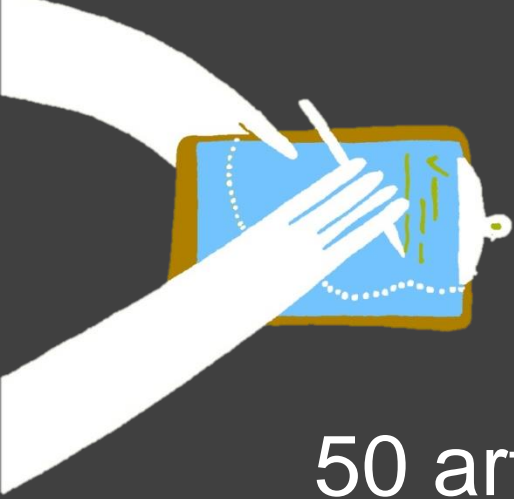
(Arksey & O'Malley, 2007; Levac, Colquhoun, & O'Brien, 2010)

No restriction in goals or types

But: on family matching

Published 1990 or later

Search words: match* AND foster / adoption



RESULTS

50 articles or books

29 on adoption

17 on foster care

4 on both

21 empirical articles

29 theoretical articles

RESULTS

on what **should** be considered



RESULTS

on what **should** be considered



Temperament

Doelling & Johnson, 1990
Green, Braley, & Kisor, 1996

RESULTS

on what **should** be considered



Temperament

Ethnicity

Ali, 2013

Anderson & Oriana Linares, 2011

Auld, 1993

Barn & Kirton, 2012

Brown, Arnault, Sintzel, & George, 2011

Brown, George, Sintzel, & Arnault, 2009

Charles, Rashid, & Thoburn, 1992

Flynn, 2000

Frazer & Selwyn, 2004

Hayes, 2003

Johnson, Mickelson, & Davila, 2013

McRoy & Griffin, 2012

Rhodes, 1992

Ridley & Wainwright, 2010

Wainwright & Ridley, 2012

Wood, 2009

RESULTS

on what **should** be considered



Temperament

Ethnicity

 **Attachment**

Briggs & Webb, 2010

Rushton, Mayes, Dance, & Quinton, 2003

Walker, 2008

RESULTS

on what **should** be considered



Temperament

Ethnicity

Attachment

 **Permissions**

Veevers, 1991

RESULTS

on what **should** be considered



Temperament

Ethnicity

Attachment

Level of needs

 Sibling bond

Ryan, 2002

RESULTS

on what **should** be considered

Models

Variables

Profiles

Interaction

De Maeyer, Vanderfaeillie, & Stroobants, 2012; Redding, Fried, & Britner, 2000; Street & Davies, 1999; Strijker & Zandberg, 2001; Ter Meulen, Vinke, De Baat & Spoelstra, 2014; Van Dam, Nordkamp, & Robbroeckx, 2000



RESULTS

on what **should** be considered



Instruments

FPAS, PAS, CBCL, DOTS-R, Hennepin County matching Tools, RASS, IRASS, SAFE, TSAAS, BEST, CFAI-I, CFAI-W, VBPS

De Maeyer, Vanderfaeillie, & Stroobants, 2012; De Maeyer, Vanderfaeillie, Van Holen, Vanderschoonlandt, & Leconte, 2013; Hanna & McRoy, 2011; Valdez & McNamara, 1994; Ward, 1997

RESULTS

on what actually is considered

Health needs Contact moments

Attachment Chemistry Interests

Talents Type of needs Safety

Ethnicity Family composition

Birth family wishes Parenting style

Dance, Ouwejan, Beecham, & Farmer, 2010; Farmer & Pollock, 1999; Randall, 2009

RESULTS

on what actually is considered

Unrecorded characteristics

Limited time

Pressure to match

Lack of choice

Looking for the ideal family

Fundamental mismatch

Cousins, 2003; Dance, Ouwejan, Beecham, & Farmer, 2010; De Baat, Meulen, Stoltenborgh, & Vinke, 2014; Farmer & Pollock, 1999; Norgate, Hayden, Osborne, & Traill, 2012; Ward, 1997; Waterhouse & Brocklesby,

RESULTS

on what **actually** is considered

Differences culture

Differences organizations

Differences between matchers

Dance, Ouwejan, Beecham, & Farmer, 2010; Modell & Dambacher, 1997;
2012; Thomas, 2013

DISCUSSION



Matching is a balancing act

Is it not just based on availability?

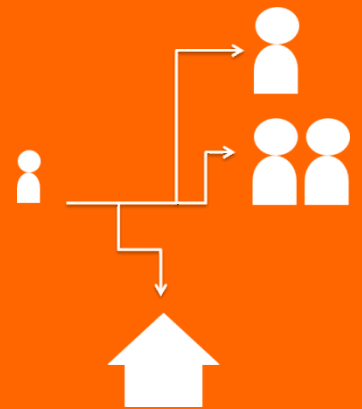
**We need to gain a better understanding
of the decision making process**

PREVIEW

An overview of factors influencing the matching decision making in foster care

Interviews – Vignettes

File analysis – Questionnaire



Thank you for your attention



let's keep in touch!
k.zeijlmans@rug.nl