

ONLINE

# MEIJI UNIVERSITY

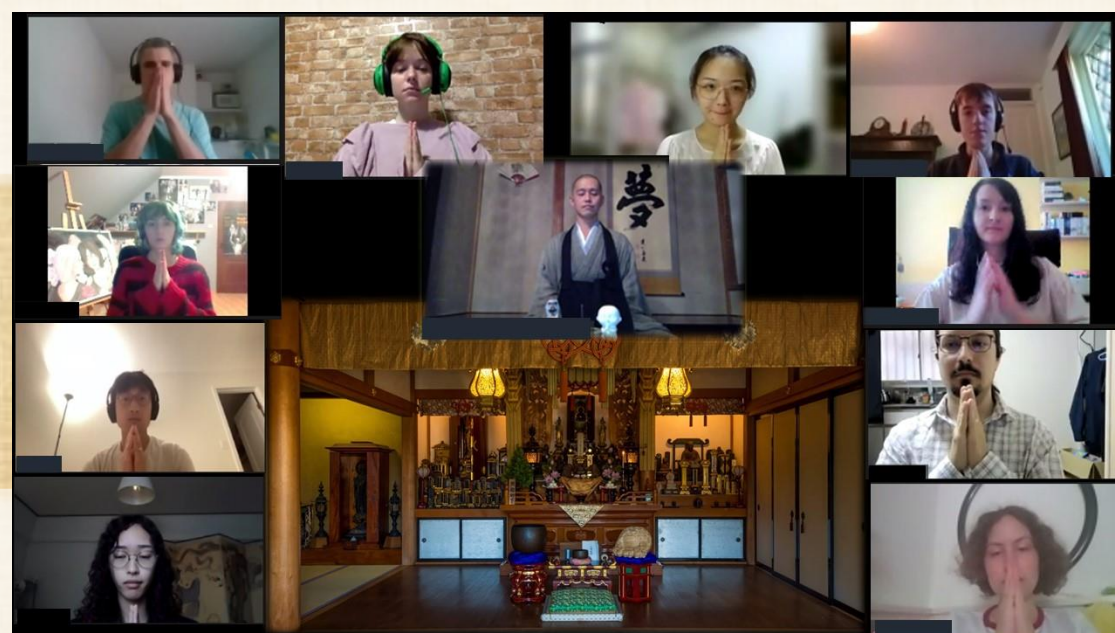
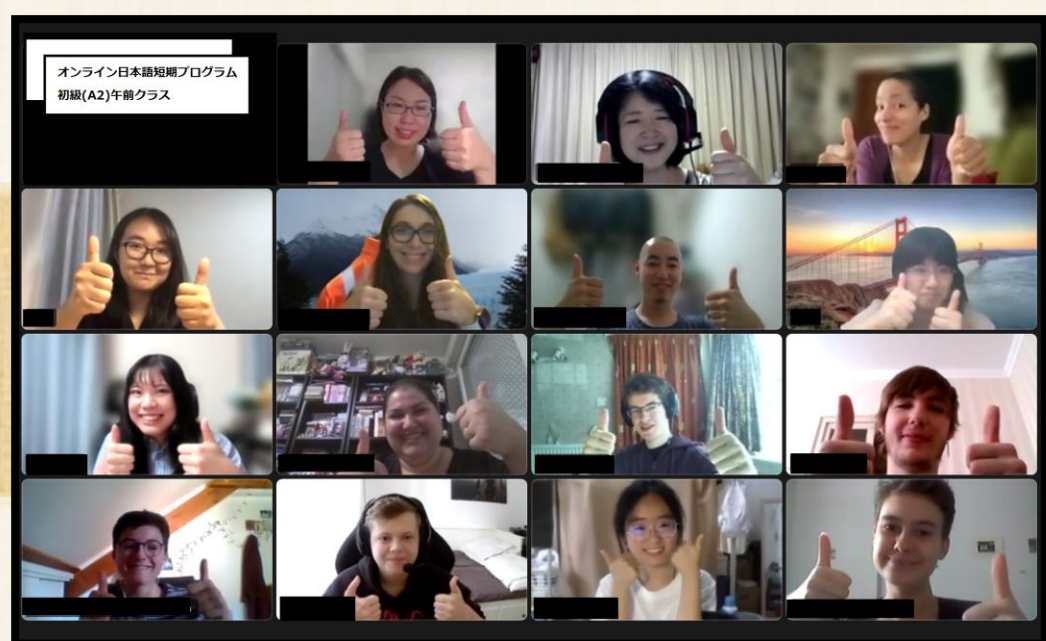


## Intensive Japanese Language Program Winter 2022

Meiji University Japanese Language Education Center will offer an Online Intensive Japanese Language Program this winter 2022.

This Program, using online conference system (Zoom), focuses on improving overall Japanese proficiency and understanding on Japanese society and culture through interaction with Meiji students and experiencing Japanese culture.

Don't miss this opportunity to study Japanese with Meiji University's online intensive Japanese Language program!



### Program Dates

February 14, 2022 – March 5, 2022 (3 weeks)  
AM class 10:00-12:00 PM class 16:00-18:00 (JST)

### Entry Qualification

Undergraduate or graduate students of overseas universities

\* Students from partner institutions have priority to join

### Program Level & Capacity

Beginner 8 students in each class  
Intermediate 8 students in each class

\* More than 8 students per class may be accepted

\* Classes may be cancelled if it does not reach the minimum number

### Program Fee

JPY40,000

### Application

Nov 22, 2021 – Jan 15, 2022 24:00 (JST)

See details on our website for application



<https://www.meiji.ac.jp/cip/english/programs/mjlp/winter/index.html>



# CLASS LEVEL

## Beginner Course (JLPT N4, CEFR A2 level)

This course is for students who are JLPT N4 or CEFR A2 level equivalent. Students in this level are able to listen and comprehend conversations encountered in daily life and generally follow their contents, provided that they are spoken slowly.

※ Information regarding JLPT <https://www.jlpt.jp/e/index.html>

※ Information regarding CEFR <https://www.coe.int/en/web/common-european-framework-reference-languages/home>

## Intermediate Course (JLPT N3-N2, CEFR B1 level)

This course is for students who are JLPT N3~N2 or CEFR B1 level or equivalent. Students in this level are able to listen and comprehend conversations in everyday situations, spoken at near-natural speed, and state his/her own opinion.

## Class Hours

Japanese Language class : 18hrs      Cultural experience : 6hrs      Exchange meeting : 4hrs

※Office hours are also available. You can consult and work together with the Japanese language teachers and Meiji students regarding class/homework.

※A certificate will be issued to participants who have successfully completed the course.



	Mon	Tue	Wed	Thu	Fri	Sat
Feb	14 <sup>th</sup>	15 <sup>th</sup>	16 <sup>th</sup>	17 <sup>th</sup>	18 <sup>th</sup>	19 <sup>th</sup>
<b>Week 1</b>	Japanese Language Class	Office Hour	Japanese Language Class	Cultural experience	Japanese Language Class	Exchange Meeting
Feb	21 <sup>st</sup>	22 <sup>nd</sup>	23 <sup>rd</sup>	24 <sup>th</sup>	25 <sup>th</sup>	26 <sup>th</sup>
<b>Week 2</b>	Japanese Language Class	Office Hour	Japanese Language Class	Office Hour	Japanese Language Class	Cultural experience
Feb/Mar	28 <sup>th</sup>	Mar 1 <sup>st</sup>	2 <sup>nd</sup>	3 <sup>rd</sup>	4 <sup>th</sup>	5 <sup>th</sup>
<b>Week 3</b>	Japanese Language Class	Cultural experience	Japanese Language Class	Office Hour	Japanese Language Class	Exchange Meeting / Closing Ceremony

\*The schedule is subject to change.

## Contact

Meiji University Japanese Language Center /International Student Office

1-1 Kanda Surugadai, Chiyoda-ku Tokyo 101-8301 Japan

TEL : +81-3-3296-4141 FAX : +81-3-3296-4360

E-mail : mjlp@meiji.ac.jp

