



3 Collaborative Research Centers  
*CRC 1472: Transformation of the Popular*  
*CRC 1187: Media of Cooperation*  
*CRC/TRR 257: Particle Physics Phenomenology after the Higgs Discovery*

Research Training Group 2493  
*Consequences of Social Services Work*



Support for early career researchers:  
*House of Young Talents*  
*Women Career Service*  
*Intra-University awards for early career researchers*  
*Women-specific mentoring*



## Profile Areas

MEDIA & CULTURE

EDUCATION &  
SOCIAL SOCIETY

SENSORICS &  
VISUAL COMPUTING

MATTER &  
QUANTUM SYSTEMS

## Areas of Competence

SMART WORK & SMART EVERYDAY

NANOTECHNOLOGY & NEW MATERIALS

HEALTH CARE & GERONTOLOGY

# At a Glance 2021 / 2022

## Location and Contact Information

North Rhine-Westphalia



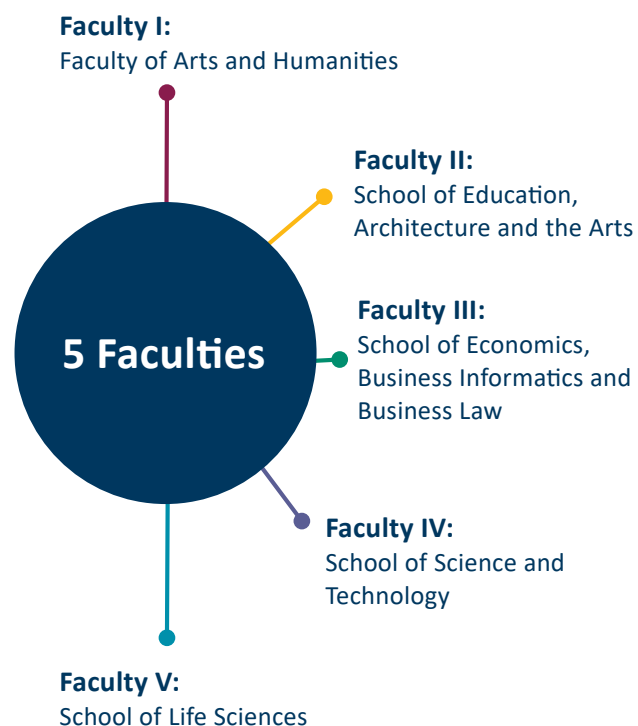
Mailing address:  
Universität Siegen  
Postfach  
D-57068 Siegen

Central phone number  
+49 271 740-0

[www.uni-siegen.de](http://www.uni-siegen.de)



## Studying at the University of Siegen...



### Students and Graduates

Students Winter Semester 20/21	18,698 of which 52 % female / 13 % international students
Graduates Academic Year 2020*	2,721 of which 58 % female
First-year students Academic Year 2020*	4,564 of which 58 % female / 13 % international students

\*Academic Year 2020 = Winter Semester 2019/20 + Summer Semester 2020

## ... in Germany's Greenest Large City

- Familiar and friendly study atmosphere
- Livable region
- Award-winning canteen on campus



### Our Degree Programs



We are an interdisciplinary, open-minded university offering a wide range of subjects, from the Humanities, Social Sciences and Economics to Natural Sciences, Engineering and Life Sciences.

## University Locations

The University of Siegen is spread over two central campuses and several locations distributed over the area of the City of Siegen. Plans are underway to move more school and faculties to the downtown area.

### Haardter Berg Campus

*Extensively modernized campus  
with renovated University Library  
and modern canteen*

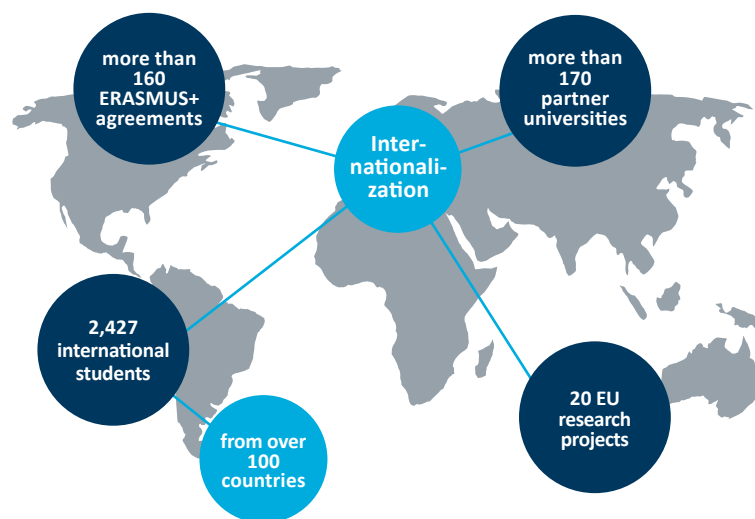


### Downtown campus

*Located in partly historic buildings  
New on-site canteen  
opened in 2021  
Modern Lecture Hall Center*



## International focus



## University Employees

