

Research at the University of Siegen



3 Collaborative Research Centers
CRC 1472: Transformation of the Popular
CRC 1187: Media of Cooperation
CRC/TRR 257: Particle Physics Phenomenology after the Higgs Discovery

Research Training Group 2493
Consequences of Social Services Work



Support for early career researchers:
House of Young Talents
Women Career Service
Intra-University awards for early career researchers
Women-specific mentoring
Welcome Center for International Researchers



Profile Areas

MEDIA & CULTURE

EDUCATION &
SOCIAL SOCIETY

SENSORICS &
VISUAL COMPUTING

MATTER &
QUANTUM SYSTEMS

Areas of Competence

SMART WORK & SMART EVERYDAY

NANOTECHNOLOGY & NEW MATERIALS

HEALTH CARE & GERONTOLOGY



At a Glance

Location and Contact Information

North Rhine-Westphalia



Mailing address:
Universität Siegen
Postfach
D-57068 Siegen

Central phone number
+49 271 740-0

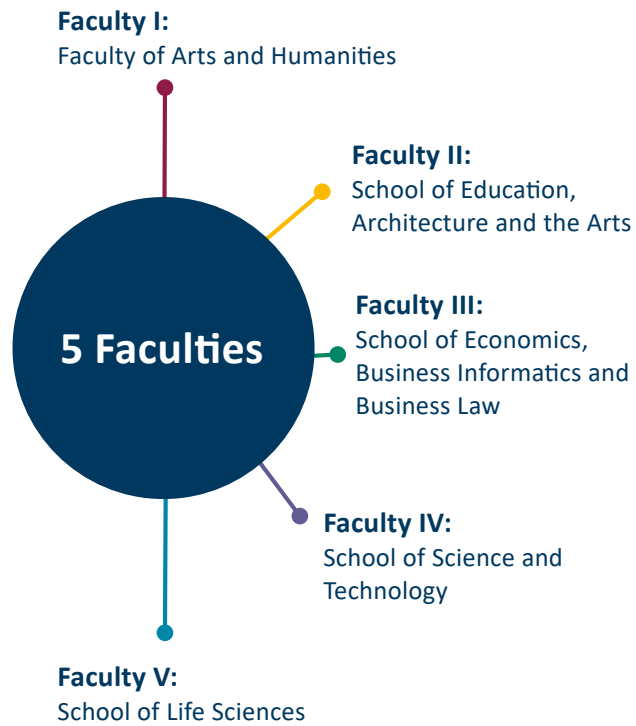


www.uni-siegen.de



Status: 2023

Studying at the University of Siegen...

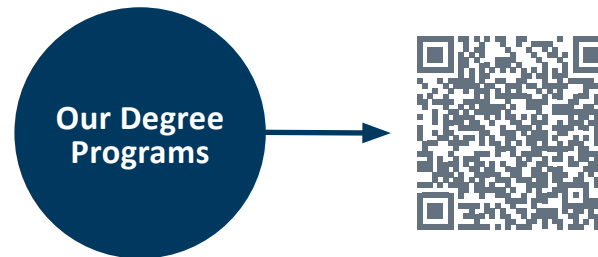


Students and Graduates	
Students Winter Semester 22/23	16,671 of which 53 % female / 14 % international students
Graduates Academic Year 2021*	2,920 of which 60 % female
First-year students Winter Semester 22/23	3,329 of which 58 % female / 13 % international students

*Academic Year 2021 = Winter Semester 2020/21 + Summer Semester 2021

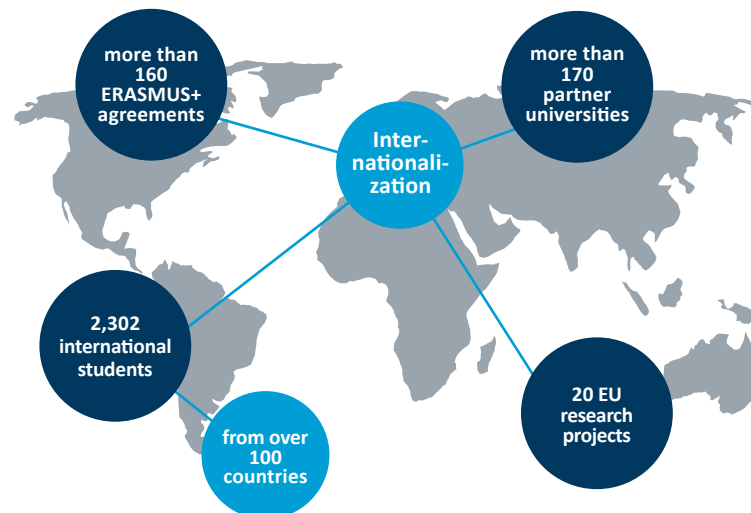
... in Germany's Greenest Large City

Familiar and friendly study atmosphere
Liveable and lovable region
Award-winning canteen on campus



We are an interdisciplinary, open-minded university offering a wide range of subjects, from the Humanities, Social Sciences and Economics to Natural Sciences, Engineering and Life Sciences.

International focus



University Locations

The University of Siegen is spread over two central campuses and several locations distributed over the area of the City of Siegen. Plans are underway to move more school and faculties to the downtown area.

Haardter Berg Campus

Extensively modernized campus
with renovated University Library
and modern canteen



Downtown campus

Located in partly historic buildings
New on-site canteen
opened in 2021
Modern Lecture Hall Center



University Employees

2,296 staff positions
(headcount, as of Dec. 31, 2022)

246 professors
of which 25 % female

1,177 research staff
of which 40 % female

862 technical and administrative staff
of which 62 % female

11 trainees and interns
of which 36 % female

